

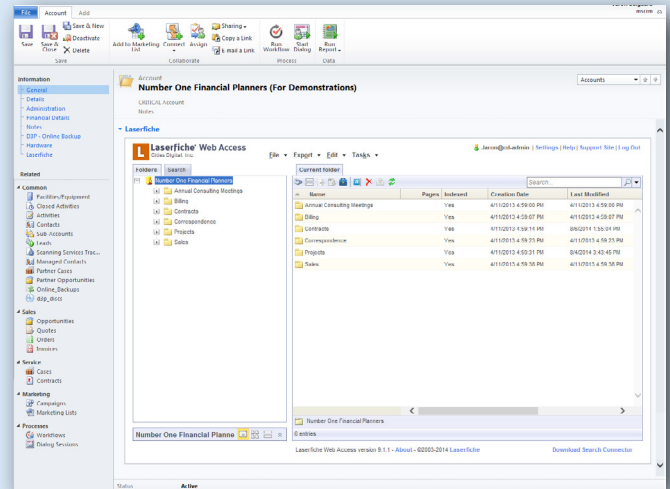
Microsoft Dynamics® CRM Integration for Laserfiche®

Cities Digital's Integration allows for easy interaction between Microsoft Dynamics® CRM and Laserfiche®. Users are able to dynamically interact with corresponding Account, Contact and Lead documents stored in Laserfiche® from the CRM interface.

Features of Cities Digital's MSCRM® Integration with Laserfiche® include:

- **Configuration page for administrators to map CRM attributes to Laserfiche® template fields to in order to optimize searching.**
- **Gain full access and interaction to respective Account, Contact and Lead documentation.**
- **The ability to upload, edit, export and delete relevant documents in Laserfiche® from the CRM interface.**
- **Utilize Laserfiche® search options for documents, folders, briefcases and template data within the CRM interface.**

The Laserfiche® tab located within Account, Contact and Lead records provides users with full access to corresponding documentation stored in Laserfiche®. This Integration utilizes Laserfiche Web Access® giving users complete Laserfiche® functionality to upload or scan in documents; export electronic files and briefcases; create files and folders; and edit template data.



The administration configuration page allows for mapping between Laserfiche® template fields and CRM records to optimize searching within Laserfiche®. Additionally, users may upload different Laserfiche® briefcases per Account, Contact and Lead entities which will automatically create the necessary folder structures in Laserfiche® (if a folder structure does not already exist).

Contact sales@citiesdigital or call **855-714-2800 x 2** for more information about Cities Digital's Microsoft CRM® Integration for Laserfiche®.

MSCRM® & LASERFICHE®

855-714-2800

sales@citiesdigital.com

Laserfiche® is a trademark of Laserfiche



CITIES DIGITAL®
TAKE INFORMATION FURTHER

www.citiesdigital.com