

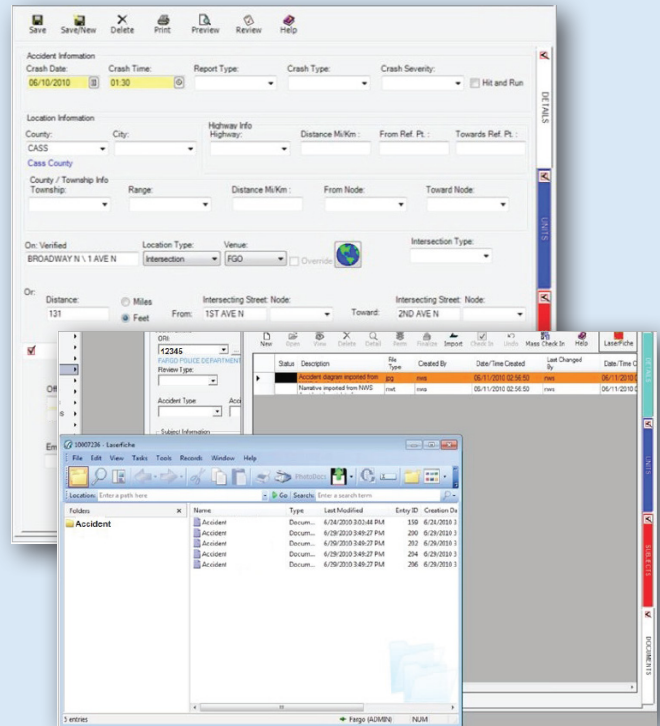
New World® Integration for Laserfiche®

Cities Digital's New World® Integration offers the ability to access Laserfiche® Documents from New World® Systems interface. Users can view Laserfiche® Documents corresponding with New World® records, as well as scan and upload Documents directly into the corresponding folder.

Features of Cities Digital's New World® Integration with Laserfiche® Include:

- **Real time notification in New World® of existing documents or no existing documents contained within Laserfiche®.**
- **Configuration page to correlate Laserfiche® templates and tokens with New World® metadata. Configuration can be different depending on New World® module.**
- **View Laserfiche® Documentation that corresponds to currently selected Record.**
- **Scan or Upload Documents into Laserfiche® from the New World® Interface.**
- **Use Laserfiche® Client or Web Access®.**

Cities Digital's New World® Integration offers access to Laserfiche® Documentation from the New World® Systems interface. Located under the Documents tab in New World®, users will find a Laserfiche® button that indicates the existence of a corresponding Laserfiche® folder. If no folder exists in Laserfiche®, the Integration will create one.



The Scanning feature auto-populates Laserfiche® Template data in the new Document, and imports it into the respective folder in Laserfiche®. This integration also allows for uploading documents directly from the New World® interface.

Contact sales@citiesdigital or call 855-714-2800 x 2 for more information about Cities Digital's New World® Integration for Laserfiche®.

New World® & LASERFICHE®

855-714-2800

sales@citiesdigital.com

Laserfiche® is a trademark of Laserfiche



CITIES DIGITAL®
TAKE INFORMATION FURTHER

www.citiesdigital.com