

unfetterfiche

unshackle your desktop



Free Your DMS from Inefficient Workflow!

Unfetterfiche unlocks your desktop by integrating the power of your Laserfiche system with your favorite Windows applications. This unique tool amps up the convenience and efficiency of your document management environment.

Unparalleled Unfetterfiche!

Unfetterfiche brings together so many systems and makes the work they do more productive.

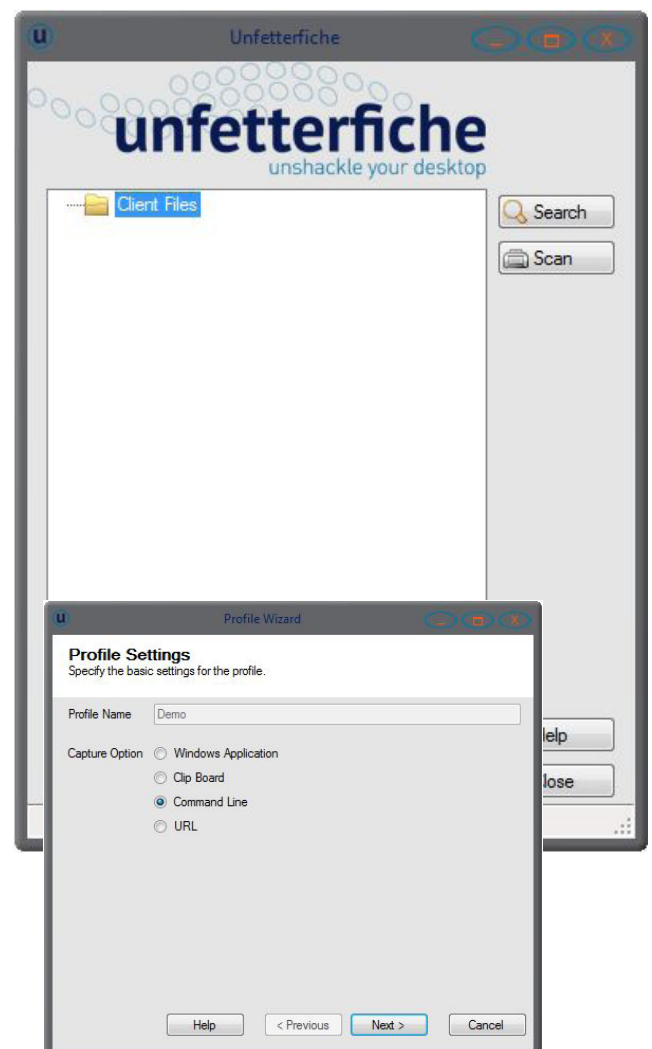
Unfetterfiche offers:

- Accounting system integration with invoices or vouchers
- CRM integration around client profiles
- ERP integration

Unlimited Unfetterfiche!

Unfetterfiche allows for immediate integration with almost all Windows applications. Here's how:

- Inside a Windows application users may signify a field value as a searchable field, folder or document name in their Laserfiche system.
- That key field allows users to pull associated documents or folders from Laserfiche while using their favorite application.
- Users may pull documents or folders by clicking an on-screen button or using a hot-key. The integration is as easy as dragging a cursor over the designated field.



To learn more about **Unfetterfiche** see the other side.

unfetterfiche

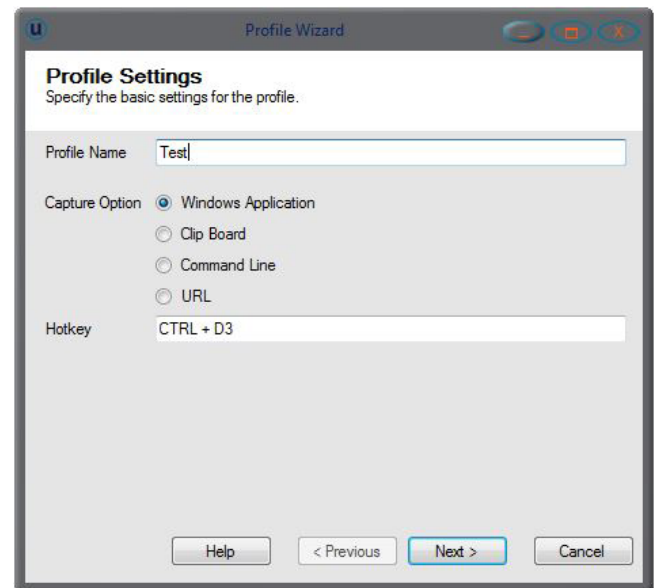
unshackle your desktop



CITIES DIGITAL
TAKE INFORMATION FURTHER

Unmistakable Unfetterfiche, offers more features like:

- Scan directly into Laserfiche while using data from the application on the screen to immediately index documents.
- Grab additional data in different onscreen fields and place into template fields or folder paths.
- Generate barcodes for scanning in batch mode or with Quick Fields or Kofax.
- Generate a barcode on a dymo label printer out of Unfetterfiche.
- View documents in the Laserfiche client, webaccess or weblink.



Unlock more about **unfetterfiche**
on the other side.